

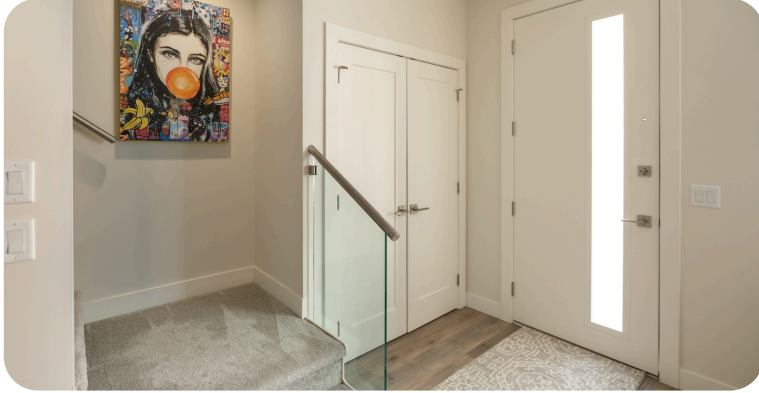


**23 115 WYNDHAM  
CRES**



**RE/MAX Kelowna  
STONE  
SISTERS**





## PROPERTY FEATURES

- Prime Glenmore Location
- Almost-New Townhome
- Bright Open-Concept Layout
- Gourmet Kitchen with Island
- Luxurious Primary Suite
- Fully Fenced Yard
- Double Garage & Crawl Space
- Pet-Friendly (2 Dogs Allowed)
- Walking Distance to Schools
- Minutes to UBCO & Airport

Year Built: 2024  
1,555 Square Feet  
Taxes: \$ 3,469  
Parking: Attached Garage  
3 bedrooms 3 bathrooms  
Stata Fees: \$284

The information contained herein is deemed reliable but cannot be guaranteed as to its accuracy. Any information of special interests should be obtained through independent verification.

CONTACT US FOR  
MORE INFORMATION:

250.862.7675 | [info@stonesisters.com](mailto:info@stonesisters.com)  
| [stonesisters.com](https://stonesisters.com)

